

ROGERS PARK

OPEN

FOR

BUSINESS



Rogers Park Business Alliance
1448 W. Morse Ave.
Chicago, IL 60626
773.508.5885
info@rogers-park.com
www.rogers-park.com

ROGERS PARK: UNIQUE IN EVERY WAY

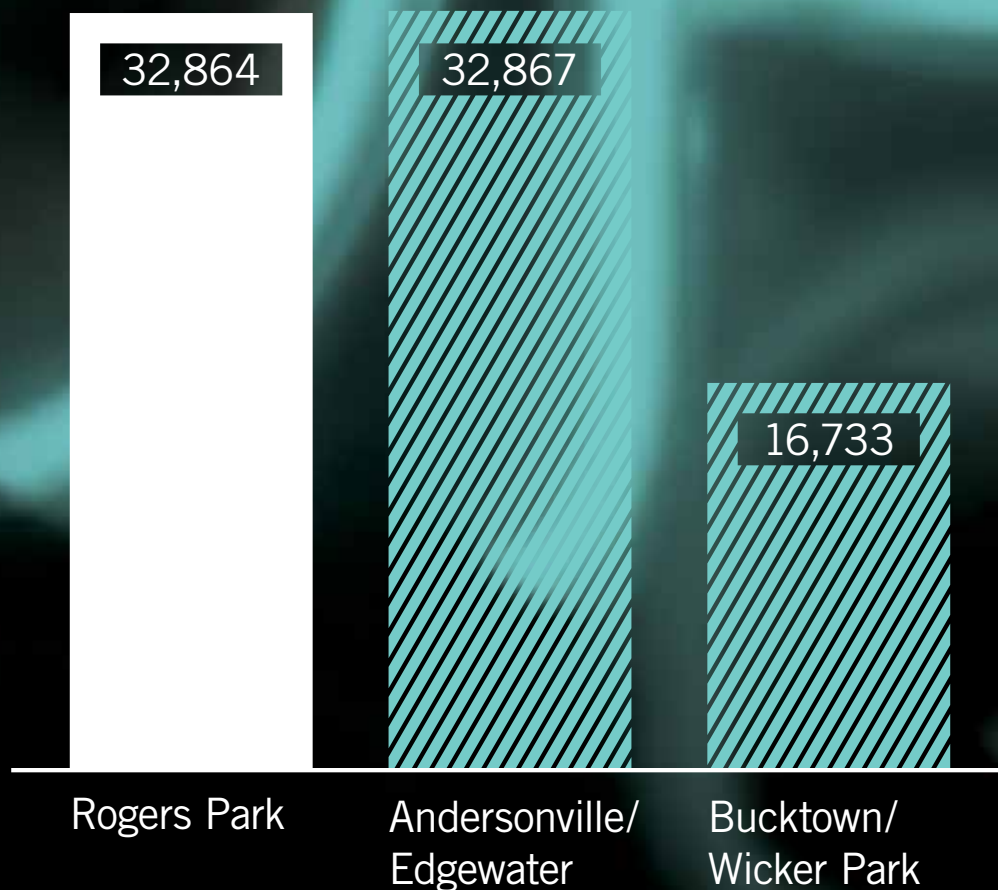
We are looking for independent, creative, community-minded business owners and entrepreneurs.

Businesses in Rogers Park take advantage of street cleaning, beautification, façade rebate programs, and technical assistance provided by two Special Service Areas. Community events and festivals promote local businesses and networking events strengthen connections in Roger Park. Don't miss out on this business opportunity!

Let us show you around Rogers Park. Contact the Rogers Park Business Alliance for more information and a tour of our business districts.

THOUSANDS OF CUSTOMERS

Here. Now: Rogers Park has as many or more customers per square mile as other hot areas



Population per square mile. 2009 Estimate.
Source: Claritas

BUSINESS POTENTIAL

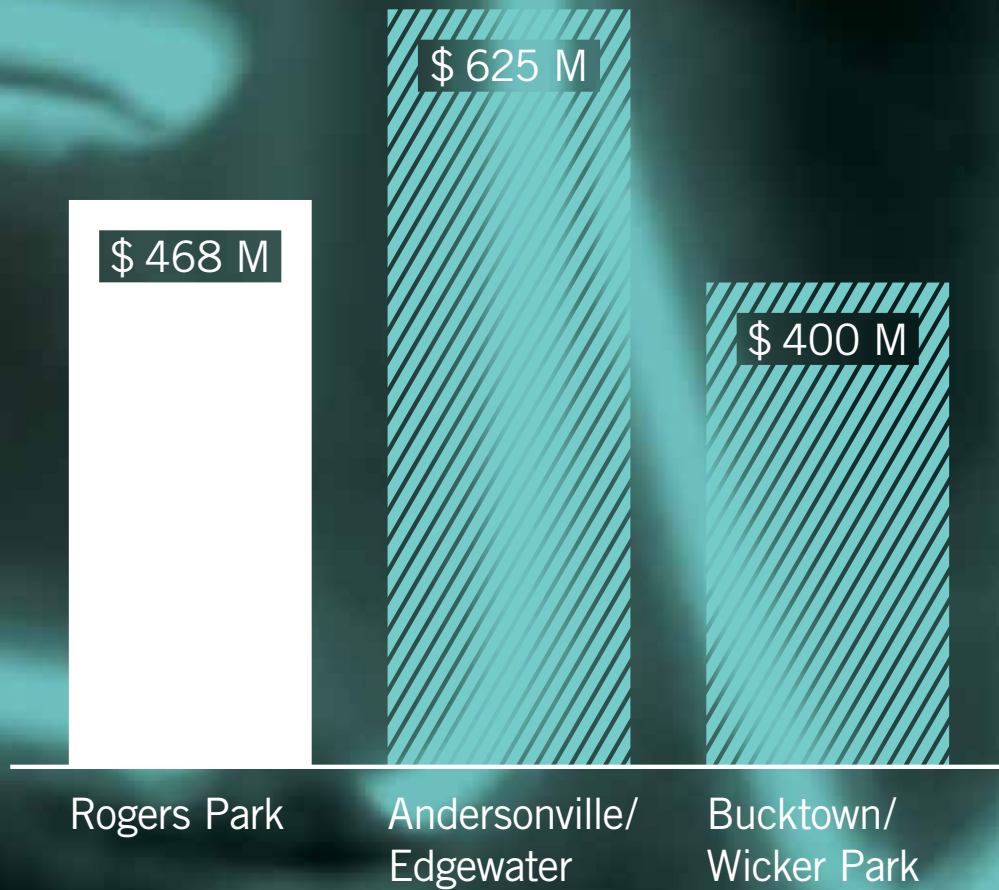
Here. Now: there's a market for you to capture

BUSINESS TYPE	NEW BUSINESS OPPORTUNITY
Furniture and Home Furnishings	\$ 7 _M
Supermarket/Grocery	\$ 68 _M
Clothing	\$ 21 _M
Full-Service Restaurant	\$ 17 _M

Unmet demand in millions. 2009 Estimate.
Source: Claritas

SPENDING POWER

Here. Now: Rogers Parkers spend money

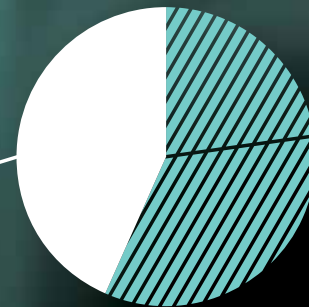


Total specified consumer expenditure per square mile. 2009 Estimate.
Source: Claritas

TARGET MARKET

Here. Now: the young, educated consumers you are looking for

AGE	%
0-17	24
18-44	46
45 +	30



EDUCATION	%
Bachelor's Degree	19
Master's Degree	9
Professional School Degree	2
Doctorate Degree	2

ETHNICITY	%
Hispanic	34
Black or African American	28
White	27
Asian	6
Some other Race	1
Two or More Races	4

VALUE

Here. Now: great space at low prices



Average rents per sq. ft. sampled July 2009.

Source: CoStar, Craigslist, LoopNet

SAFETY

Here. Now: less crime than you might think

COMMUNITY AREA	CRIME IN 2008	POPULATION	CRIME PER 1,000 PEOPLE
Rogers Park	2,111	60,799	34.7
Lake View	4,360	80,278	55.2
Lincoln Park	3,942	61,699	65.0
Logan Square	4,032	101,064	39.7

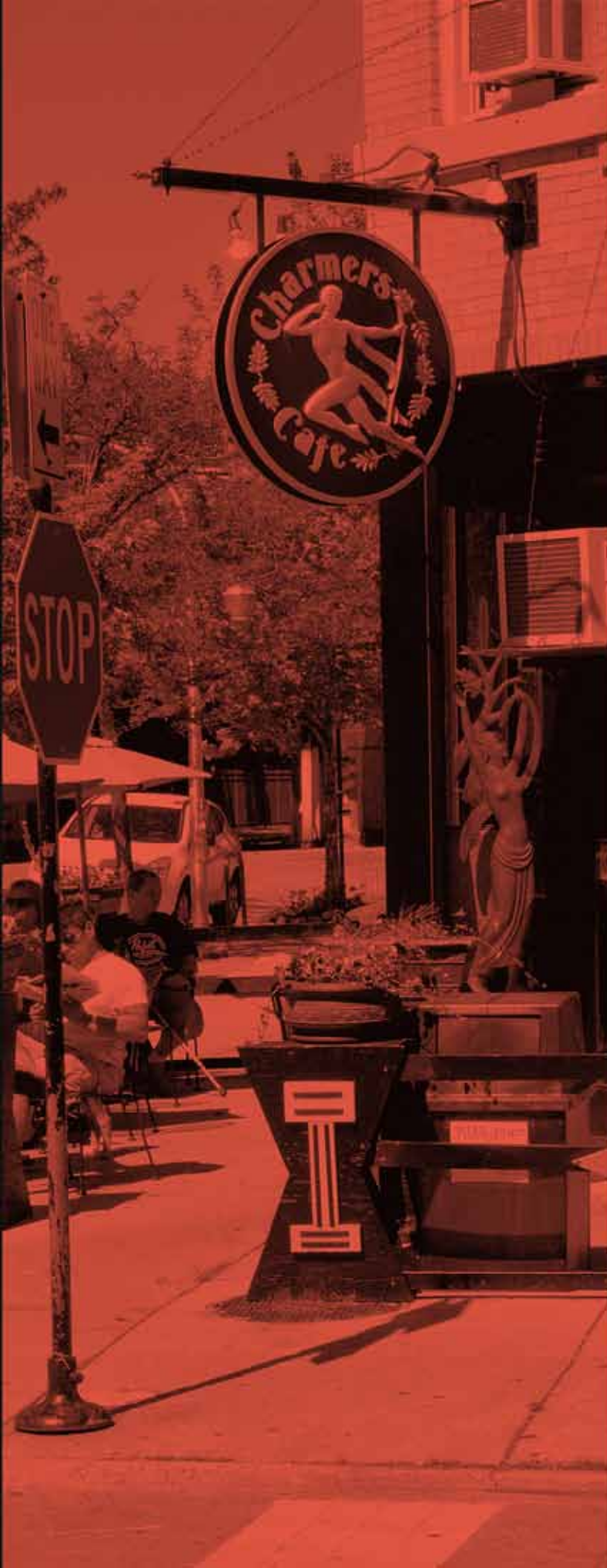
Population 2008 Estimate. Index Crime: Combination of eight crime categories
Source: Claritas, Chicago Police Department 2008 Annual Report



MEET

ROGERS

PARK



HOWARD STREET

Take advantage of 6,100 average weekday transit riders at the Howard Street El station and make your mark on our commercial corridor nestled between Rogers Park and Evanston.

TRAFFIC COUNTS

STREET	COUNT	YEAR TAKEN
Clark	11,400	2006
Devon	16,400	2006
Howard	17,900	2006
Ridge	19,200	2006
Sheridan	36,800	2006

Source: IDOT 2009

JARVIS SQUARE

Restaurants, a theater, dog groomer, salon, massage, coffee house, and more—all in a quaint neighborhood square.

SHERIDAN ROAD

Take advantage of 36,000 cars, 18,000 Loyola University students, faculty, and staff, 20,000+ daily bus riders, and 4,407 average transit riders at the Loyola El Station per day.





“We opened our family business on Howard Street in Rogers Park in 1982. As our business grew, we decided to stay on Howard and continue to invest in our business and the community.”

**MICHAEL, OWNER,
CARIBBEAN AMERICAN BAKERY**



“My partners and I opened Morseland in Rogers Park in 2004.

We enjoy being a community gathering place and look forward to more entertainment options joining us on Morse Avenue.”

MATTHEW, OWNER, THE MORSELAND



“Rogers Park is one of the most diverse and vibrant communities found anywhere in the world. Our community is a model for the rest of the city and nation, truly showing that a racially and economically diverse community can thrive and grow. Our commitment to local small businesses continues to strengthen our local economy.”

JOE MOORE, ALDERMAN, 49TH WARD
(SHOWN HERE WITH MAYOR DALEY)



“When we were looking to open another bar in Chicago, we chose Rogers Park because of the Glenwood Avenue Arts District community. We saw great potential and have been rewarded with loyal customers. In fact, one year later we’re expanding next door. In 2008, we were voted Best Bar for Mixed Company by Chicago Reader.”

RENEE, OWNER, THE GLENWOOD BAR



MORSE
11-8

FINALMENTE AQUI!
(773) 338-4920



“I’m proud to work in the Glenwood Avenue Arts District. The businesses here support the arts and find ways to partner with us for mutual benefit—and we all team together to produce the annual Glenwood Avenue Arts Fest. Lifeline Theatre has been in Rogers Park for over 25 years and we plan to be here for a hundred more!”

DOROTHY, ARTISTIC DIRECTOR, LIFELINE THEATRE



“We are the largest full-service auto body shop in the city, and we’re located on Clark Street in Rogers Park. We love being in a neighborhood that supports local businesses and understand their needs.”

SALIM, OWNER, ROGERS PARK AUTO BODY



“Working for a locally owned bank allows me to develop strong relationships with local business owners and respond quickly to their needs. I love working with Rogers Park businesses and welcome potential business owners to join our community.”

**MINA, VICE PRESIDENT, BUSINESS DEVELOPMENT,
COMMUNITY FIRST BANK**



MORSE AVENUE AND GLENWOOD AVENUE

Your creative business is invited to add flavor to our thriving arts and entertainment district. The Glenwood Avenue Arts District is an urban stretch of mixed-use stores and upper floor apartments with a European flavor: narrow, brick-laid streets, murals on the elevated train embankments and quaint shops and storefronts. There are three award-winning theaters in the corridor, numerous art and music venues, all in close proximity to unique and friendly bars and restaurants.

CLARK STREET

This primarily Hispanic district has some of the best food from around the world including Middle Eastern, Chinese, Thai, Peruvian, and, of course, the best Mexican on the north side of Chicago.

